

# LONDON & COUNTRY 7 DAYS

## WITH GLOBUS THE DETAILS ARE DONE

You'll always visit the key sites and enjoy more inclusions; inside visits and special features are shown in UPPERCASE in the tour description, including admission charges where applicable.

For standard inclusions, see page 8.

**TAKE A BREAK** TRIP SCALE Leisurely      On the Go

## LF LOCAL FAVOURITES

Globus has created special experiences that will bring you behind the scenes, spotlight the unique stories of your journey, and bring to life the local flavour of your destination. Just look for the LF icon to see what we've included for you.

## ALL THIS IS INCLUDED

### ■ SIGHTSEEING AND MORE

**LONDON** LF Welcome dinner at a historic London pub, followed by a relaxed, narrated, nighttime river cruise on the Thames; guided sightseeing, visit St. Paul's Cathedral; visit LF Buckingham Palace (departures 0729-0916 only); LF farewell dinner and West End show

**STRATFORD-UPON-AVON** Take pictures of Anne Hathaway's Cottage, visit Shakespeare's birthplace

**OXFORD** Walking tour through the university city

**STONEHENGE** Visit the prehistoric monument

**BATH** Visit the Roman relics

■ **HOTELS** LONDON Park Plaza Westminster Bridge (SF)

■ **MEALS** Full English breakfast (B) daily; 2 three-course dinners (D) with wine and choice of menu, including dinner at a traditional pub and a farewell dinner at a London restaurant

■ **TRANSPORTATION** Motorcoach; Thames River cruise, high-speed Eurostar train (Tour GAE)

■ **HEADSETS** in Paris (Tour GAE)

## CUSTOMISE YOUR HOLIDAY

■ **EXTRA NIGHTS** in London, Paris

■ **ADD PARIS TO YOUR HOLIDAY** (Tour GAE) with Monograms (part of the Globus family of brands)

■ **MyACCOUNT** Personalise your tour ahead of time with additional excursions. Visit our website for details and conditions.



LF LOCAL FAVOURITE ENJOY A SPECIAL DINNER, FOLLOWED BY A PRIVATE, NARRATED CRUISE ON THE THAMES PAST SOME OF LONDON'S MOST BEAUTIFUL ILLUMINATED SITES.



LF LOCAL FAVOURITE A VISIT TO BUCKINGHAM PALACE IS INCLUDED FOR DEPARTURES 0729 THROUGH 0916.

### DAY 1 ARRIVE IN LONDON, ENGLAND. (Sun.)

Welcome to London! Your Tour Director will meet you upon your arrival at the hotel, and is available to help you make the most of your stay. The rest of the day is free for you to relax or start exploring the lively British capital. This evening, enjoy LF a three-course dinner, followed by a private, narrated CRUISE on the Thames River to admire some of the capital's most beautiful illuminated sights. (D)

### DAY 2 LONDON. (Mon.)

After a hearty English breakfast, morning sightseeing with a Local Guide includes all the famous landmarks: the Houses of Parliament and Big Ben beside River Thames, Westminster Abbey, Whitehall's mounted horseguards and the Prime Minister's Downing Street, Piccadilly Circus, and Buckingham Palace. The highlight is a visit to ST. PAUL'S CATHEDRAL, Sir Christopher Wren's masterpiece built between 1675 and 1708. In the afternoon you might enjoy an optional excursion to the 900-year-old Tower of London with its fabulous Crown Jewels. (B)

DAY 3 LONDON. (Tue.)

Today offers you the opportunity to explore London on your own. For departures 0729 to 0916, a morning visit to **Lf** BUCKINGHAM PALACE is included (dates are subject to unexpected closures). You will see the magnificent State Rooms, richly furnished with many of the greatest treasures from the Royal Collection and used by the Royal Family for ceremonial occasions and official entertaining. The afternoon is free for you to sightsee on your own or to join an optional excursion to Windsor Castle, the oldest and largest occupied castle in the world, where you'll see the magnificent State Apartments and St. George's Chapel. (B)

DAY 4 LONDON. EXCURSION TO SHAKESPEARE COUNTRY. (Wed.)

Set out for an exciting day of sightseeing. In Stratford-upon-Avon, take pictures of Anne Hathaway's Cottage and visit SHAKESPEARE'S BIRTHPLACE, with time afterwards to enjoy this pretty Elizabethan town at your own pace. Then, take a drive into the Cotswold Hills and through picturesque villages and idyllic rolling English landscapes. The final highlight is a walking tour through Oxford that takes in the colleges where Britain's elite receives its outstanding education. (B)

DAY 5 LONDON. EXCURSION TO STONEHENGE & BATH. (Thu.)

Today's excursion brings you to mysterious, prehistoric STONEHENGE. First, explore the visitor centre with its imaginative exhibitions, then take the shuttle to the stone circle and admire the magnificence of the monument up close. Travel on to the beautiful Georgian city of Bath. Following a scenic drive into the heart of the city, visit the ROMAN BATHS, built nearly 2,000 years ago. You will also have time to enjoy the city on your own and stroll past Bath Abbey and along the Avon River before returning to London. (B)

DAY 6 AT LEISURE IN LONDON. (Fri.)

Another day with time for independent activities. A variety of optional excursions is offered: you could stroll through Hyde Park and stop for a visit of Kensington Palace, home to Prince William and Catherine, Duchess of Cambridge; or you might consider an excursion to the Warner Bros. Studios, where the famous *Harry Potter* films were produced. This is an amazing opportunity to walk through the iconic set across the original stone floor of the Great Hall, or along Diagon Alley to see the array of wonderful wizarding shops. For the finale of your London holiday, join your Tour Director and newfound friends for a delicious **Lf** three-course farewell dinner, followed by TICKETS for one of London's leading theatre productions. (B,D)

DAY 7 LONDON. (Sat.)

Your holiday ends with breakfast this morning. (B)

ADD PARIS WITH MONOGRAMS™ TOUR GAE 10 DAYS



PRICED FROM \$888<sub>US</sub>

This Monograms portion of your holiday includes travel by high-speed Eurostar train (Standard class) from London to Paris, transfers to/from train stations, 3 overnights, guided sightseeing and services of an expert Local Host.

DAY 7 LONDON-PARIS, FRANCE. (Sat.)

Travel by high-speed EUROSTAR TRAIN (Standard class) to Paris. Your Local Host is available to help you make the most of your stay. (B)

DAY 8 PARIS. (Sun.)

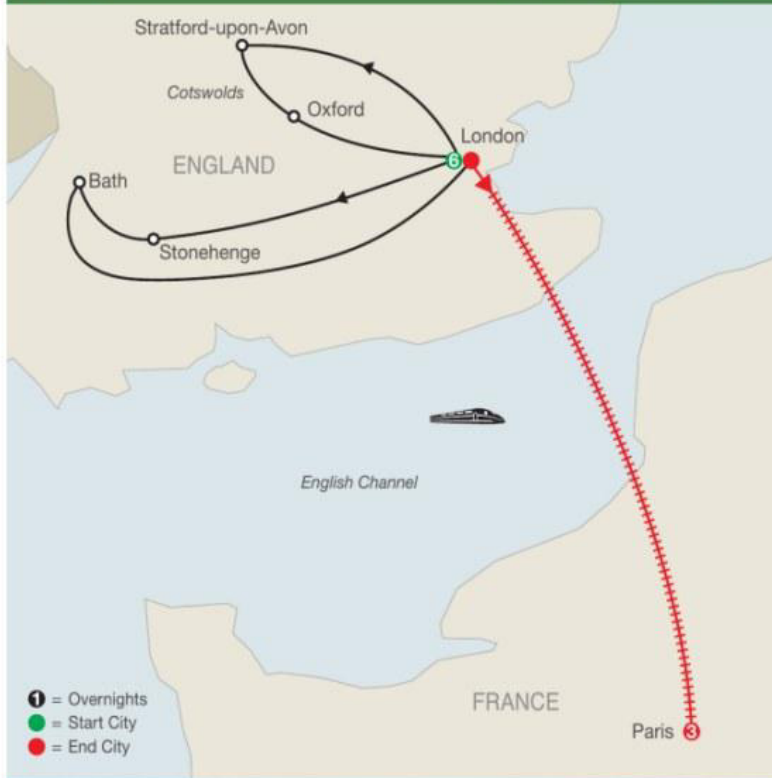
Morning guided sightseeing features Paris' most famous highlights, including the gothic NOTRE DAME CATHEDRAL and THE LOUVRE. (B)

DAY 9 PARIS. (Mon.)

Your Local Host will have many suggestions for your day at leisure. (B)

DAY 10 PARIS. (Tue.)

Your holiday ends with breakfast this morning. (B)  
Your hotel is the Mercure Paris Centre Tour Eiffel (F).



STONEHENGE

TOURS GA & GAE DATES & PRICES

PRICED FROM \$1,889<sub>US</sub>

GA: 7 days in London

GAE: 10 days from London to Paris

Departure Number	Start London*	TOUR GA			TOUR GAE			Departure Number	Start London*	TOUR GA			TOUR GAE		
		End London	Land Only	End Paris	Land Only	End London	Land Only			End Paris	Land Only				
0408	Sun 08 Apr	14 Apr	1889	17 Apr	2777	0715	Sun 15 Jul	21 Jul	2169	24 Jul	3091				
0415	Sun 15 Apr	21 Apr	1889	24 Apr	2777	0722	Sun 22 Jul	28 Jul	2169	31 Jul	3091				
0422	Sun 22 Apr	28 Apr	1889	01 May	2777	0729	Sun 29 Jul	04 Aug	2249	07 Aug	3171				
0429	Sun 29 Apr	05 May	2169	08 May	3184	0805	Sun 05 Aug	11 Aug	2249	14 Aug	3171				
0506	Sun 06 May	12 May	2169	15 May	3184	0812	Sun 12 Aug	18 Aug	2249	21 Aug	3171				
0513	Sun 13 May	19 May	2169	22 May	3184	0819	Sun 19 Aug	25 Aug	2249	28 Aug	3171				
0520	Sun 20 May	26 May	2169	29 May	3184	0826	Sun 26 Aug	01 Sep	2249	04 Sep	3264				
0527	Sun 27 May	02 Jun	2169	05 Jun	3184	0902	Sun 02 Sep	08 Sep	2249	11 Sep	3264				
0603	Sun 03 Jun	09 Jun	2169	12 Jun	3253	0909	Sun 09 Sep	15 Sep	2249	18 Sep	3485				
0610	Sun 10 Jun	16 Jun	2169	19 Jun	3184	0916	Sun 16 Sep	22 Sep	2249	25 Sep	3264				
0617	Sun 17 Jun	23 Jun	2169	26 Jun	3184	0923	Sun 23 Sep	29 Sep	2169	02 Oct	3405				
0624	Sun 24 Jun	30 Jun	2169	03 Jul	3119	0930	Sun 30 Sep	06 Oct	2169	09 Oct	3184				
0701	Sun 01 Jul	07 Jul	2169	10 Jul	3091	1007	Sun 07 Oct	13 Oct	2159	16 Oct	3174				
0708	Sun 08 Jul	14 Jul	2169	17 Jul	3091										

Gratuities per person for Tour Director and Driver: \$57

Prices are per person, based on double room occupancy.

Single room supplement: GA \$572; GAE \$836-\$1175

GA: No triple room reduction

GAE: Triple room reduction per person: \$15-\$105

in single room \$191-\$281, in twin \$109-\$152, in triple \$103-\$143

**Extension GAE:**

Upgrade supplement to Standard Premier on Eurostar Train: \$175

**Extra nights per person in Paris**

in single room \$187-\$418, in twin \$97-\$213, in triple \$59-\$97

**Extra nights per person in London:**